



# Mounting Instructions

The EasyRack shop shelves are great products. Rock Solid, stable and 100% compatible with a German brand that has been distributed for over 50 years to almost all DIY stores, garden centers and retail detail throughout and Europe and far beyond. Please find herewith a practical mounting guide that will assist you installing your EasyRack shop shelves.

- 1) **Preparation:** Unpack all parts of your order and arrange them type by type in order to familiarize yourself with each type. Hereunder you'll find a drawing that shows how to mount a single shop shelf. The mounting of a gondola (double) shop shelf is done in a similar way.

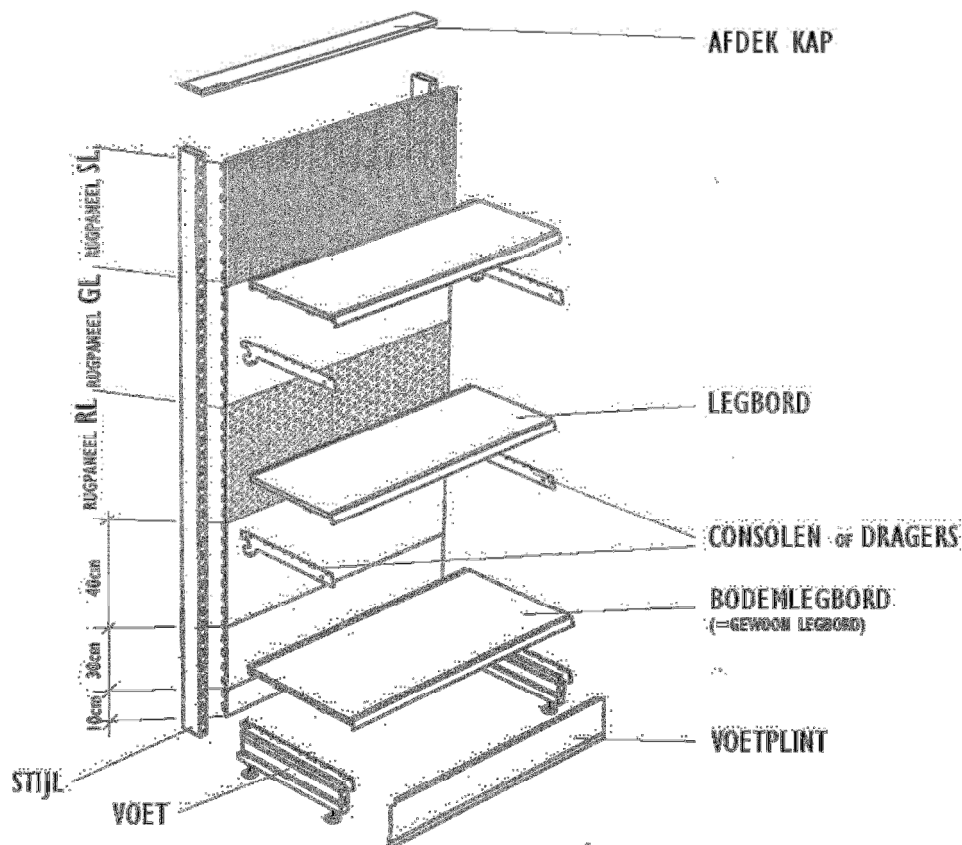


Image 1

2) **Mounting base legs:** Take one of the uprights and insert the plastic nipple of the base leg in the bottom H-slot of the upright. Shift the base leg horizontal towards the upright in order to slide the metal pin into the H-slot. Finally use a rubber hammer to secure the base leg in the upright. In case you're mounting a gondola, then you have to repeat the above on the other side of the upright. As displayed in image 2.



Image 2

3) **Mounting back panels:** Once this step is completed your shop shelves will start to get their final shape. This step is also very intuitive. Your back panels have hooks on the side which will fit into the H-slots of the uprights (image 3). It's simply a matter of sliding all pieces together. The only thing you need to pay attention to is your desired composition, do you want GL/SL/RL panels or do you have various panel heights.

Once you have mounted the back panels the rack is able to stand autonomous. Now it's the time to put the shop shelf level. You can do this by turning the adjustable feet in the base legs. This will guarantee you a smooth installation of the other extensions and everything will fit like a glove. In case mounting a gondola, you have to repeat the above on the other side of the uprights.



Image 3

4) **Mounting plinths:** This is the piece that will cover the opening between both base legs on the front side of your shop shelf. Mount the plinth in the front slot of the base legs, as shown in Image 4. In order to facilitate this you can spread the base legs so you have more space to insert the plinths. Finally you slide the plinth vertically until there is no longer a gap between the rubber of the plinth and the floor.

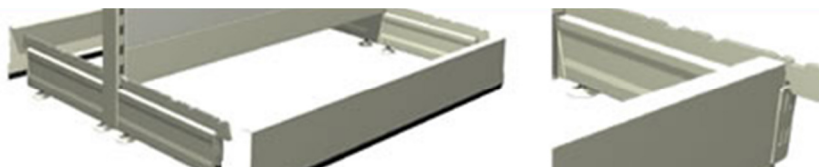


Image 4

5) **Mounting shelves:** Now that the plinth has been mounted, the bottom shelf needs to be fitted. The shelf, facing large nose forward, is mounted on top of the base legs (image5). The sides of the shelf fit in the holes in the upside of the base legs. The backside will align with the back panel. The shelf fits as such perfect in the indentations on the front side of the base legs.

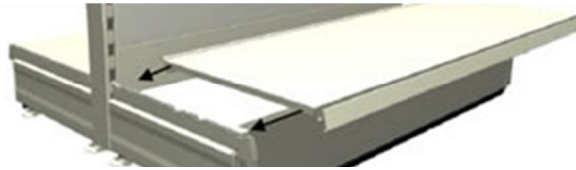


Image 5

6) **Mounting top cover:** The top cover will fit over both back panels in case you're installing a gondola. This top cover will prevent that objects fall between both back panels. To finish end caps are mounted on both sides of the gondola.

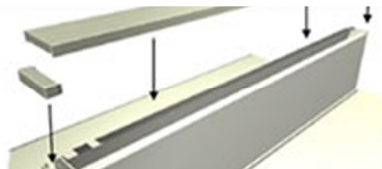


Image 6

In case you might still experience issues while mounting your shop shelving, do not hesitate to contact us

When you might require assistance  
we can offer you a **mounting resources**  
Hourly rate at €38/h from door to door, excl. VAT

All the best,  
**EasyRack**  
shop4shopshelving